

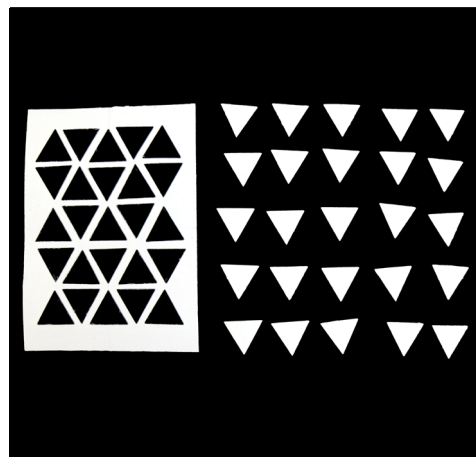
# Create Your Own Embossing Folders



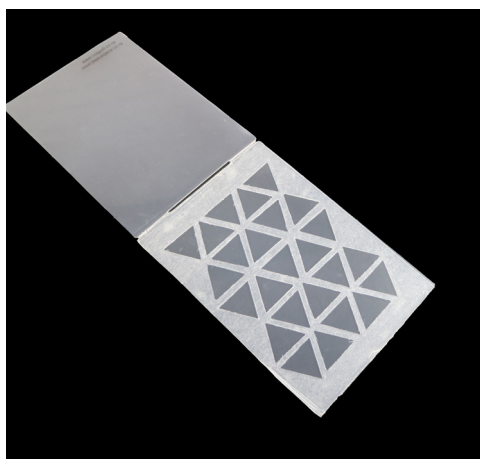
1. You will need a blank embossing folder, a sheet of doeflex and a Midas Touch Adhesive Sheet.



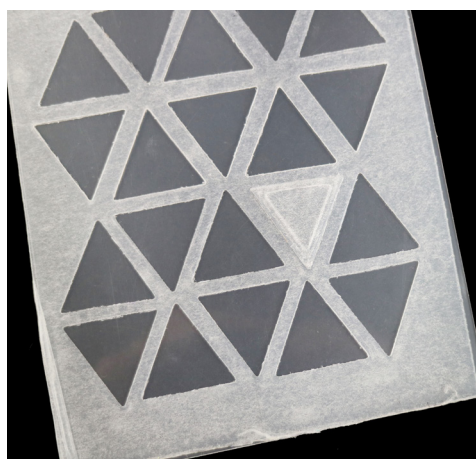
2. Carefully peel off the backing of the adhesive sheet and mat onto the doeflex.



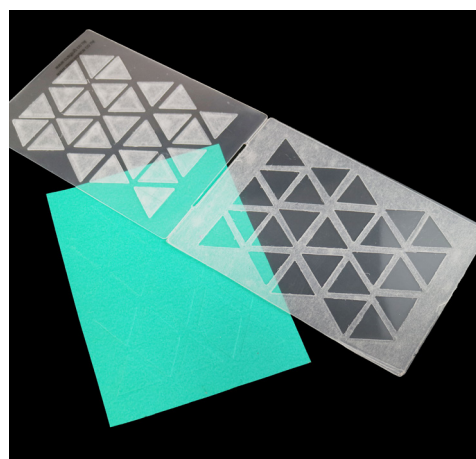
3. Using a Scan N Cut machine or your chosen deep dish die, cut out your chosen design from the doeflex that has the adhesive sheet mat onto it.



4. Carefully peel away the backing of the adhesive sheet from the cut out design and place onto the inside bottom of the blank embossing folder. Keep the cut out shapes for the opposite side of the embossing folder.



5. Place the cut out shapes into the cut out design. This will ensure the design or pattern lines up perfectly with the opposite side. Peel away the backing to reveal the adhesive side.



6. Close the embossing folder, pressing down firmly so the adhesive shapes stick to the inside top of the embossing folder. Your embossing folder is now ready to use.

**Top Tip:** For a deeper embossed effect, apply an adhesive sheet to both sides of the doeflex before cutting.